



## SNOWMAN CONSTRUCTION CREW

### STUDENT TARGETS

- **Leadership:** I will show others how to follow rules and be a good example during class activities.
- **Kindness:** I will use kind words when talking to my classmates.

### EQUIPMENT & SET-UP

#### Equipment:

- 1 Snowman Construction Kit per group
- 1 Snowman Birth Certificate per student
- Tape / adhesive / stapler for posting snowmen
- Construction Paper or Posterboard
- Box of crayons per group

#### Set-Up:

- Create groups of 4 to 6 students.
- Give 1 snowman construction kit and box of crayons to each group.
- Create a Snowman Championships bulletin board for students to post their snowmen. Use posterboard if a bulletin board is not available.



### ACTIVITY PROCEDURES

1. This activity is Snowman Construction Crew. The object of this activity is to work as a team to create a fun and friendly snowman that will hang on our bulletin board.
2. We will take 10 minutes (or more) to create our snowmen using a Snowman Construction Kit.
3. You will use crayons to color in the pieces of your snowman. Once the pieces are prepared, you'll take turns posting the snowman on the bulletin board.
4. If there's time after your group is done with construction, use the Snowman Birth Certificate to write about your snowman.
5. *Teacher Note: you can decide to have groups complete the snowman birth certificates individually, as a group, or complete them as a class.*

### DEBRIEF QUESTIONS

- **DOK 1:** What is one example of a way you can be a leader?
- **DOK 2:** How can a leader help others during a partner/group activity?
- **DOK 3:** If a leader uses kind words when talking with you, how does that impact your willingness to follow them? Why?

### TEACHING TIPS

- **TIP 1:** Have pre-determined areas within the classroom for each group of students to work based on the number of groups you will have.
- **TIP 2:** The snowmen created during this activity will be displayed on your Snowman Championships bulletin board. Please note, snowflakes will be created in activity 3 that will also be displayed on this bulletin board. Plan the spacing of the snowmen to allow for the snowflakes that will be added after activity 3.
- **TIP 3:** Share the directions verbally as well as provide a visual example of a completed Snowman before students begin the activity.



## SNOWMAN STORYTIME

### STUDENT TARGETS

- **Leadership:** I will lead by example by following all instructions and participating in a meaningful and fun way.
- **Kindness:** I will listen to my partner and use encouraging words when we talk to each other.

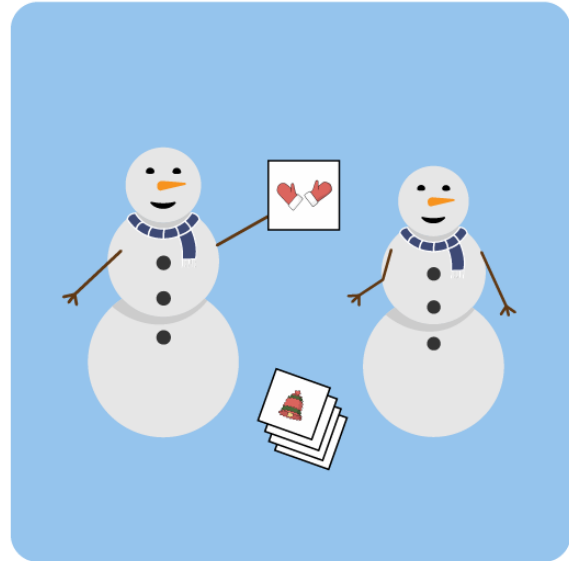
### EQUIPMENT & SET-UP

#### Equipment:

- 3 to 5 Snowman Story Cards per pair
- Snowman Story Cover

#### Set-Up:

- Pair students. Each pair with enough space to talk to each other and move safely.
- Give each pair 3 to 5 Story Cards.



### ACTIVITY PROCEDURES

1. It's time to be creative with an activity called Snowman Storytime. The object of this game is to tell a fun story with your partner's help using the Snowman Story Cards.
2. When I say, "GO!" you and your partner will flip over the top story card in your pile. You must use the object on the card in your story. One partner will begin as the storyteller, the other will be the active listener.
3. When you hear me say, "Snowman Switcharoo!" you and your partner will change roles. The storyteller will become the active listener and the active listener will become the storyteller.
4. When you hear me say, "Plot Twist!" you and your partner will choose a new card from your pile and continue the story using that new object.
5. If there's time after you and your partner tell your story, use the Snowman Story Cover to draw a scene from your story.
6. *Teacher Note: If possible, have students stand and face each other with the active listener doing a light physical activity – like marching in place.*

### DEBRIEF QUESTIONS

- **DOK 1:** What does it mean to lead by example?
- **DOK 2:** Why is it important for a leader to use encouraging words and listen to others?
- **DOK 3:** What might happen if a leader isn't fair or respectful?

### TEACHING TIPS

- **TIP 1:** Determine if space available allows for the active listener to do a light physical activity. If so, have a list of physical activity options ready that can be done safely in your teaching space.
- **TIP 2:** Discuss some examples of words that students could use to begin their stories before beginning the activity.
- **TIP 3:** Assign a peer partner if needed to assist with reading the Story Cards or with performing the physical activities.



## SNOWMAN ACTS OF KINDNESS

### STUDENT TARGETS

- **Leadership:** I will share my ideas with confidence while also listening to the ideas of others.
- **Kindness:** I will identify acts of kindness that my classmates and I can do for friends and family.

### EQUIPMENT & SET-UP

#### Equipment:

- 2 Kindness Snowflake Pages per student
- Crayons and scissors

#### Set-Up:

- Students work independently at their desk.
- Give each student 2 Kindness Snowflake pages.



### ACTIVITY PROCEDURES

1. It's time for us to create a snowstorm with Snowman Acts of Kindness. Before we begin creating all of the snowflakes in the snowstorm, let's make a list of kind things that you think friendly and helpful snowmen might do for their friends and family.
2. *Teacher Note: coach students through the process of discussing and listing a variety of acts of kindness.*
3. Now that we have a complete list, let's create our snowstorm. Everyone has 2 snowflake pages. You will write one Snowman Act of Kindness on each snowflake. You can choose from the list that we made, or you can think of another act of kindness. You can decorate and then cut out your snowflake when you're done writing.
4. Once we create all of our snowflakes, we'll decorate our snowman bulletin board to create a snowstorm of kindness!

### DEBRIEF QUESTIONS

- **DOK 1:** What does it mean to be kind to someone?
- **DOK 2:** How can using kind words or doing acts of kindness make someone feel?
- **DOK 3:** What is one way you could show kindness to someone who seems left out?

### TEACHING TIPS

- **TIP 1:** Discuss some examples of acts of kindness with students before they begin the activity.
- **TIP 2:** Offer the option for students to dictate what they want on their snowflake to another student or an adult who can assist with writing it for them.
- **TIP 3:** The snowflakes created during this activity will be displayed on the Snowman Championships bulletin board. They will be added to the snowmen that were created and displayed from activity 1.



## SNOWBALL TOSS

### STUDENT TARGETS

- **Leadership:** I will identify ways to show leadership with my partner during this activity.
- **Kindness:** I will notice and say “thank you” when my partner does something kind or encourages me during the activity.

### EQUIPMENT & SET-UP

#### Equipment:

- 1 white yarn ball, fleece ball, rolled up sock, or paper ball per student
- 1 Yeti Monster Target per pair of students

#### Set-Up:

- Place Yeti Monster Targets throughout the classroom. Place the targets in safe locations where it’s okay for students to toss the “snowballs” at it. Hang on a wall, lay flat on the floor, or place on top of a desk.
- Each student has a “snowball.”
- Students are in pairs near a target.



### ACTIVITY PROCEDURES

1. It’s time for a Snowball Toss. The object of this game is to hit the Yeti Monster as many times as you can in 1 minute.
2. Play Rock, Paper, Scissors to determine who will toss first.
3. When the music starts, the first player will toss both snowballs (one at a time) at your Yeti Monster Target. As soon as both snowballs are tossed, that player will move to collect the snowballs so that the next player can toss.
4. Continue taking turns until the music stops.
5. Each time you toss safely toward the target you get 1 point. Each time you hit the target you get 5 points. You and your partner are working together – so keep track of your team score!
6. Once we have our first round score, we’ll play round two and try to beat our score.

### DEBRIEF QUESTIONS

- **DOK 1:** What is an example of a way to show leadership?
- **DOK 2:** How could a leader respond if they see someone being kind or encouraging someone?
- **DOK 3:** How could a leader respond with kindness, even if they are upset themselves?

### TEACHING TIPS

- **TIP 1:** Map out how to arrange the pairs of students a safe distance apart in your teaching space prior to this activity.
- **TIP 2:** Discuss using different amounts of force depending on the weight of the object they are tossing and the distance to the Yeti Monster Target.
- **TIP 3:** Offer a variety of different objects to toss, and allow students to choose the object they can be most successful with.



## SNOWMAN TEAM CHEER

### STUDENT TARGETS

- **Leadership:** I will work together with my classmates to complete the task of creating our team cheer.
- **Kindness:** I will be respectful and listen to others while discussing all suggestions and opinions during the creation of our team cheer.

### EQUIPMENT & SET-UP

#### Equipment:

- 1 Snowman Team Cheer Chart per class

#### Set-Up:

- This is a whole class activity. Students can work in their seats – ready for a class discussion.



### ACTIVITY PROCEDURES

1. It's time to create a Snowman Team Cheer for our class. We'll perform our cheer all next week and for the entire school at our Snowman Championship PEP Rally at the end of next week.
2. *Teacher Note: Use the Snowman Team Cheer Chart and rubric to guide the class discussion.*
3. Now that we've created our cheer, let's practice!
4. For the next week, any time our class witnesses an act of kindness or leadership, we'll put a tally mark on our board. Every time we collect 5 tally marks, we'll perform our cheer!

### DEBRIEF QUESTIONS

- **DOK 1:** What does it mean to be respectful of others?
- **DOK 2:** Do you think it is easier for a group of people to complete a task if everyone is respectful to others while they are working together? Why or why not?
- **DOK 3:** Why is it important for a leader to listen and be respectful of others during a discussion?

### TEACHING TIPS

- **TIP 1:** Before introducing the activity, set up some "ground rules" for how a respectful discussion can occur where everyone has an opportunity for their suggestions to be heard.
- **TIP 2:** Write down (or type) and display the suggestions from students as they are discussed to allow both visual and auditory learners to better follow along and participate in the discussion. This can be done by a student or an adult.



## SNOWMAN PUZZLE CHALLENGES

### STUDENT TARGETS

- **Leadership:** I will demonstrate leadership by following all instructions and participating in a meaningful and fun way.
- **Kindness:** I will identify ways to make our classroom a kinder place.

### EQUIPMENT & SET-UP

#### Equipment:

- Snowman Puzzle Pages
- Up-tempo music for 30-second dance parties

#### Set-Up:

- Project Snowman Puzzle Pages for the class to see.
- This is a class activity. Students can work in their seats as you work together to solve the puzzles.
- Allow students to stand and dance behind their desks after puzzles are solved.



### ACTIVITY PROCEDURES

1. It's time to test our snowman logic by solving Snowman Puzzle Challenges.
2. The object of this game is to earn a 30-second dance party by correctly solving a challenge in under 2 minutes. We will have a dance party for each challenge we solve.
3. *Teacher Note: Emphasize the importance of safely pushing-in chairs and respecting personal space during dance parties.*

### DEBRIEF QUESTIONS

- **DOK 1:** Did you see anyone demonstrate leadership as we worked together to solve the puzzle challenges?
- **DOK 2:** Did you hear or see anyone making sure that everyone felt included and heard?
- **DOK 3:** Think about our class during this activity. What is one thing we could all do to make our classroom an even kinder place tomorrow?

### TEACHING TIPS

- **TIP 1:** Ensure that the classroom is set up in a way that is conducive for moving safely during the celebratory dance parties. After their chairs are pushed in, establish if students need to move directly behind their chair or if they are able to move within certain areas around their chair/desk.
- **TIP 2:** Before introducing the activity, set up some "ground rules" for how to solve the puzzles in a respectful way where all students have an opportunity for input and suggestions.
- **TIP 3:** Allow students to stay in their chair if needed during the dance party.



## SNOWMAN COMPLIMENT CHAIN

### STUDENT TARGETS

- **Leadership:** I will show others how to follow rules and be a good example during class activities.
- **Kindness:** I will discuss how one small act of kindness can create a big change in our classroom and school.

### EQUIPMENT & SET-UP

#### Equipment:

- 2 Compliment Chain Snowball Pages per student
- Crayons and scissors
- Tape

#### Set-Up:

- Students work independently at their desk.
- Give each student 2 Compliment Chain Snowball Pages.
- Set out crayons, scissors, and tape so students have easy access as they work at their desk.



### ACTIVITY PROCEDURES

1. It's time for us to create a Snowman Compliment Chain. Before we begin creating our chain, let's make a list of compliments that we could share with our classmates, friends, and family members.
2. *Teacher Note: coach students through the process of discussing and listing a variety of compliments.*
3. Now that we have a complete list, let's create our chain.
4. Everyone has 2 snowball pages. You will write one compliment on each snowball. You can choose from the list that we made, or you can think of another compliment. You can decorate and then cut out your snowball when you're done writing.
5. Once we create all of our snowballs, we'll tape them together and stretch them as far as we can on our classroom wall to create our Snowman Compliment Chain.

### DEBRIEF QUESTIONS

- **DOK 1:** Can you share an example of an act of kindness? It could be one you experienced yourself or that you witnessed.
- **DOK 2:** What are some of the positive impacts that could occur from an act of kindness?
- **DOK 3:** How can one small kind act create a big change in our classroom? In our school?

### TEACHING TIPS

- **TIP 1:** Determine where the Snowman Compliment Chain will hang in your classroom (or outside your classroom door). You could even have the students give input on a place to display it once it is completed.
- **TIP 2:** Offer the option for students to dictate what they want on their snowball to another student or an adult who can assist with writing it for them.



## SNOWMAN FITNESS BINGO

### STUDENT TARGETS

- **Leadership:** I will demonstrate leadership by displaying integrity and honesty during the game.
- **Kindness:** I will celebrate others with sincerity to help our class celebrate each win during the game.

### EQUIPMENT & SET-UP

#### Equipment:

- 1 Snowman Fitness Bingo Card per student (or complete 1 card as a class)
- 1 set of Fitness Bingo Squares cut out and shuffled in a hat or box
- Pencils

#### Set-Up:

- Students begin at their desk.
- Each student begins with a Fitness Bingo Card and a pencil (or with one card displayed for the class if being played as a large group).
- Students can complete the fitness exercises with their chairs pushed into their desks.



### ACTIVITY PROCEDURES

1. It's time for Snowman Fitness Bingo! The object of the game is to connect a horizontal, vertical, or diagonal line (corner to corner) on your Bingo Card.
2. I'm going to pull a Fitness Bingo Square from the box. If you have that exercise on your board, put a check or an "x" in the box inside the correct space on your card.
3. We will all complete the movement on the square that was pulled from the box for 10 seconds before the next card is pulled.
4. As soon as you connect a full line on your card, yell, "SNOWMAN BINGO!"
5. We will play several different rounds to see how many of us can collect a Snowman Bingo.
6. *Teacher Note: Depending on time allowed, complete a variety of board challenges (e.g., create an X, get every outside border square, etc.).*

### DEBRIEF QUESTIONS

- **DOK 1:** What does it mean to have integrity?
- **DOK 2:** What is a way that you showed honesty and integrity during the game today?
- **DOK 3:** How could you hold a classmate accountable if you witnessed someone else that wasn't being honest during the game?

### TEACHING TIPS

- **TIP 1:** Preview the movements on the Fitness Bingo Squares to ensure that all of them can be completely safely in the space behind each student's desk (with the chair pushed in). Remove any card that cannot be completed safely in your teaching space or identify ways the students can modify the movement in the space available.
- **TIP 2:** Allow students to complete a modified version of the movements from the Fitness Bingo Squares or complete the movements in their chairs if needed.





## SNOWMAN ARTWORK SHOWCASE

### STUDENT TARGETS

- **Leadership:** I will discuss ways that leaders can be inspirational.
- **Kindness:** I will discuss how a kind act can inspire others to also show kindness.

### EQUIPMENT & SET-UP

#### Equipment:

- 1 Snowman Artwork Page per student
- Snowman Kindness & Leadership Word Cards
- Crayons

#### Set-Up:

- Students work independently at their desks.
- Give each student a Snowman Artwork Page.
- Display Word Cards for students to see and discuss.



### ACTIVITY PROCEDURES

1. It's time for us to create Snowman Artwork that we can showcase in the hallway outside of our classroom (or inside if the hallway is not a possibility).
2. Each piece of artwork will be inspired by a word that is related to kindness or leadership. You will write your chosen word at the bottom of your artwork page.
3. Before we begin creating our artwork, let's review a list of words that we can use for inspiration.
4. *Teacher Note: have a class discussion about each word on the list.*
5. Now that we have discussed each word, let's create our artwork.
6. Everyone has a Snowman Artwork Page. You will choose one inspirational word and write it on the bottom of your page. Then, you're going to create Snowman Art that represents what this word means to you.
7. Once we create our artwork, we'll hang all of our work in the hallway for the entire school to see.

### DEBRIEF QUESTIONS

- **DOK 1:** What were some words we discussed that you felt were related to kindness? Which ones did you feel were related to leadership?
- **DOK 2:** What are some ways that a leader can be inspirational?
- **DOK 2:** What are some acts of kindness that could potentially inspire others to also show kindness?

### TEACHING TIPS

- **TIP 1:** In addition to the list of words provided, have students discuss and brainstorm other potential words related to leadership or kindness.
- **TIP 2:** If technology is available, students could create their Snowman Art on a device or on the artwork page provided.
- **TIP 3:** Share the directions verbally as well as provide a visual example of a completed Snowman Artwork Page before students begin the activity.



## SNOWMAN GROUP REFLECTION

### STUDENT TARGETS

- **Leadership:** I will follow all instructions and rules to set an example for my classmates.
- **Kindness:** I will listen to my partner and use encouraging words when we talk to each other.

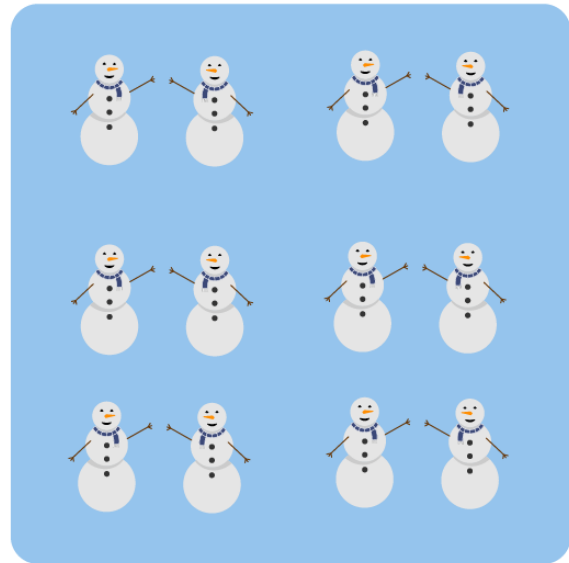
### EQUIPMENT & SET-UP

#### Equipment:

- 1 set of Snowman Reflection Question Strips
- Pencils, pens, markers, or crayons

#### Set-Up:

- Cut out the Snowman Reflection Questions and shuffle them in a hat or box.
- Students work in pairs for Think-Pair-Share.



### ACTIVITY PROCEDURES

1. Today is the final day of the Snowman Championships! Everyone has done an amazing job and I'm very proud of you. Let's take just a few minutes to think about and reflect on what we've learned in the past 2 weeks.
2. I'm going to pull a reflection question from the box. We're going to do this in Think-Pair-Share format. Right after I read a reflection question, you'll have 1 minute to think quietly about your thoughts and feelings related to this question. Next, you'll have 2 minutes to pair with your partner and talk about your thoughts. Finally, pairs will share their thoughts with the rest of the class in a group discussion.
3. We'll pull as many questions as we can in the time that we have.

### DEBRIEF QUESTIONS

- **DOK 1:** How can your actions set an example for others?
- **DOK 2:** Why is it important to use encouraging words and actively listen to others?
- **DOK 3:** What might happen if we don't speak to our friends and family in a way that is encouraging and respectful?

### TEACHING TIPS

- **TIP 1:** Have students pair up with a new partner for each question that is discussed.
- **TIP 2:** Allow students to have a peer partner if needed that can assist with the questions or with moving safely in the classroom to pair with their partner(s).